

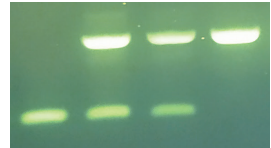
Blue Egg Gene Chicken DNA Test

- ✓ In-house testing
- ✓ PCR technology
- ✓ Easy and cost effective

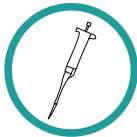
Hands-on
work



Hom Het Het Wt

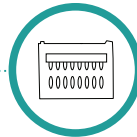


THREE SIMPLE STEPS



SETUP AND LYSIS

30 MIN



PCR

85 MIN



GEL RUN

45 MIN

