

VARIABLE SPEED MICROCENTRIFUGE

GYRO MANUAL



FEATURES

- Fixed speed 10,000 RPM
- Compact footprint
- Interchangeable rotors
 - 6 x 1.5 ml microtubes
 - 16 x 0.2 ml PCR tubes (strip format)
 - 6 adapters for 0.2 ml tubes
- Automatic safety stop
- Low operating noise
- Universal voltage
- One year warranty

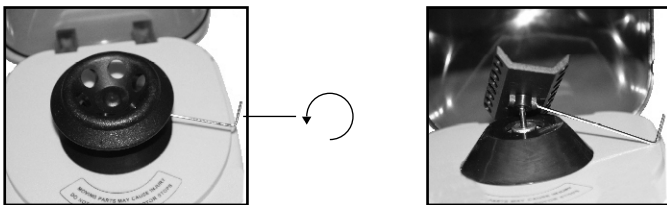
OPERATION

- 1** — Set the power switch to OFF, then plug in the power cable to the centrifuge and the outlet.
- 2** — Press the OPEN button to open the cover. The cover should pop open.
- 3** — Insert tubes. The location and weight of the tubes in the rotor should be balanced across the rotor.
- 4** — Close the cover until you hear a 'click'. Confirm that the cover is locked.
- 5** — Start the unit by switching the button to the ON position on the front left. The unit will start spinning until it reaches full speed.
- 6** — Stop the unit by switching the button to the OFF position.
- 7** — Press the OPEN button to open the cover.

Note: Pressing the OPEN button while the centrifuge is spinning will stop the rotor from turning and open the cover at the same time.

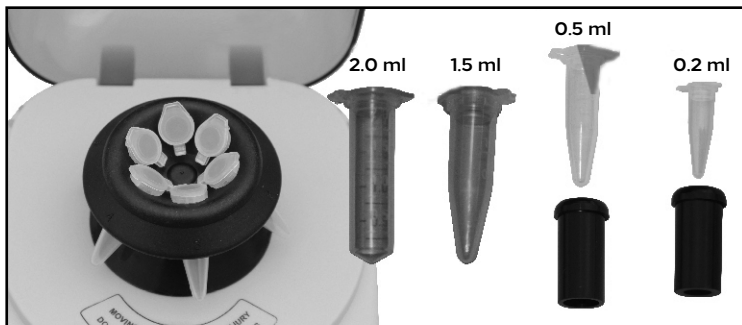
CHANGING THE ROTOR

Use the supplied Allen wrench to remove the set screw located at the base of the rotor. Pull up the rotor and replace it with a new one. Place the set screw in the new rotor and screw until tight. Do not over tighten.

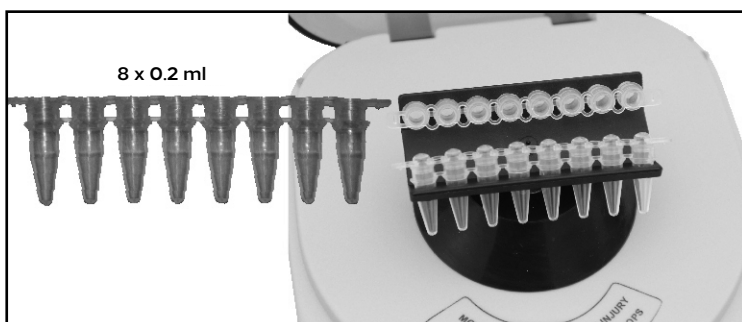


SUPPLIED ROTORS

ROTOR #1



ROTOR #2



RPM to RCF (g) CONVERSION TABLE

RCF Rotor #1 (g)	RCF Rotor #2 (g)
48	26
190	100
430	230
770	400
1200	600
1700	900
2350	1300
3100	1600
3900	2100
4800	2600
5800	3100
6900	3700
6 x 2 ml	2 x 8 x 0.2 ml
6 x 1.5 ml	
6 x 0.5 ml	
6 x 0.2 ml	

IMPORTANT NOTES

- Do not touch the rotor until it comes to a complete stop.
- Routinely check that the set screw at the base of the rotor is screwed in tightly.
- Do not move the centrifuge while it is running.
- Solvents and flammable objects should not be placed next to the machine.
- Do not use explosive, corrosive or flammable materials in the centrifuge.
- Wear personal protective equipment while operating the centrifuge, including gloves and goggles.
- Do not force tubes into the rotor.

SPECIFICATIONS

- Model: Gyro
- Catalog number: QP-1800-01
- Speed range: 10,000 RPM
- Noise level: <52 dB
- Dimensions: 17 x 15 x 13 cm
- Weight: 1 kg
- Voltage: AC 85-240 V, 50/60 Hz

