

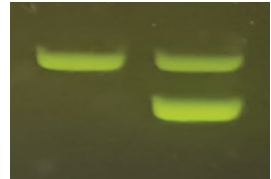
# Lavender Chicken DNA Test

- ✓ In-house testing
- ✓ PCR technology
- ✓ Easy and cost effective

Hands-on  
work



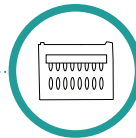
LAV\*N LAV\*L



## THREE SIMPLE STEPS



SETUP AND LYSIS  
30 MIN



PCR  
85 MIN



GEL RUN  
45 MIN

